



# Profiles in Wyoming Resilience Research Project

Dr. Jean Garrison & Dr. Jason McConnell  
School of Politics, Public Affairs & International Studies  
May 11, 2023





## Key Program Areas:

### *Who are we?*

UW program in  
School of Politics,  
Public Affairs &  
International Studies

- Statewide K-12 Partnership
  - Multimedia social studies and civics education materials free for Wyoming teachers
  - Summer teacher workshops
- Outreach Project on Community Resilience



# Known Problems

- Differing perceptions of barriers/opportunities for:
  - Educational achievement
  - Employment
  - Community resilience
- Ineffective resource allocation



# Project Objectives

- Gather community-level perspectives
  - Focus on issues of common concern: education, employment, community resilience
  - Capture perspectives in participants own words and through what they see
- Empower underserved voices
  - Employ Photovoice – a research methodology that captures perspectives through photography and narrative
  - Facilitate community forums to further understanding through dialog
  - Leverage geographic information system (GIS) technology to enable stakeholders to understand community issues and perspectives in context
- Enrich policy-making decisions
  - Add rich context to economic and behavioral data
  - Support Wyoming Innovation Partnership goals
  - Inform Wyoming economic development priorities



# Areas of Focus

- **Educational achievement**
  - Describes a person's journey as a student that begins pre-Kindergarten but stretches on through high school and perhaps beyond
- **Employment**
  - Those chances we have to gain paid work
- **Resilience**
  - That quality that allows our communities to not only survive hard times but also to drive forward and thrive in good times



# What we asked participants to do



- Share pictures with us
  - Education
  - Employment
  - Community Resilience
- Describe the pictures
  - Barrier
  - Opportunity

# Phase 1 Project Results & Next Steps

- 2022: 900 Image Submissions – Wyoming + Surrounding States (CO, UT, ID, MT, ND, SD, NE)
- Partnered with Wyoming Geographic Information Science Center to create interactive map
- Next Steps:
  - Creation of new phone app to expand project (July 2023)
  - Partner with Chambers/Economic Development Organizations, Cities/Counties/Agencies, Schools & Organizations for specific community profile projects (Fall 2023)



## Education Example

“This is a picture of Powell high schools first all girls robotic team. It depicts both opportunity since robotics is a huge/growing area for 21st century students and barrier as the program is not funded the way sports programs are. Students have to raise/pay money for the team to travel and compete. That means low income students are essentially barred.”





## Employment Example



“This is downtown Dubois, WY. These little stores are the backbone of the community and that is really all there is. It's a huge barrier but it's a way of life for this community.”

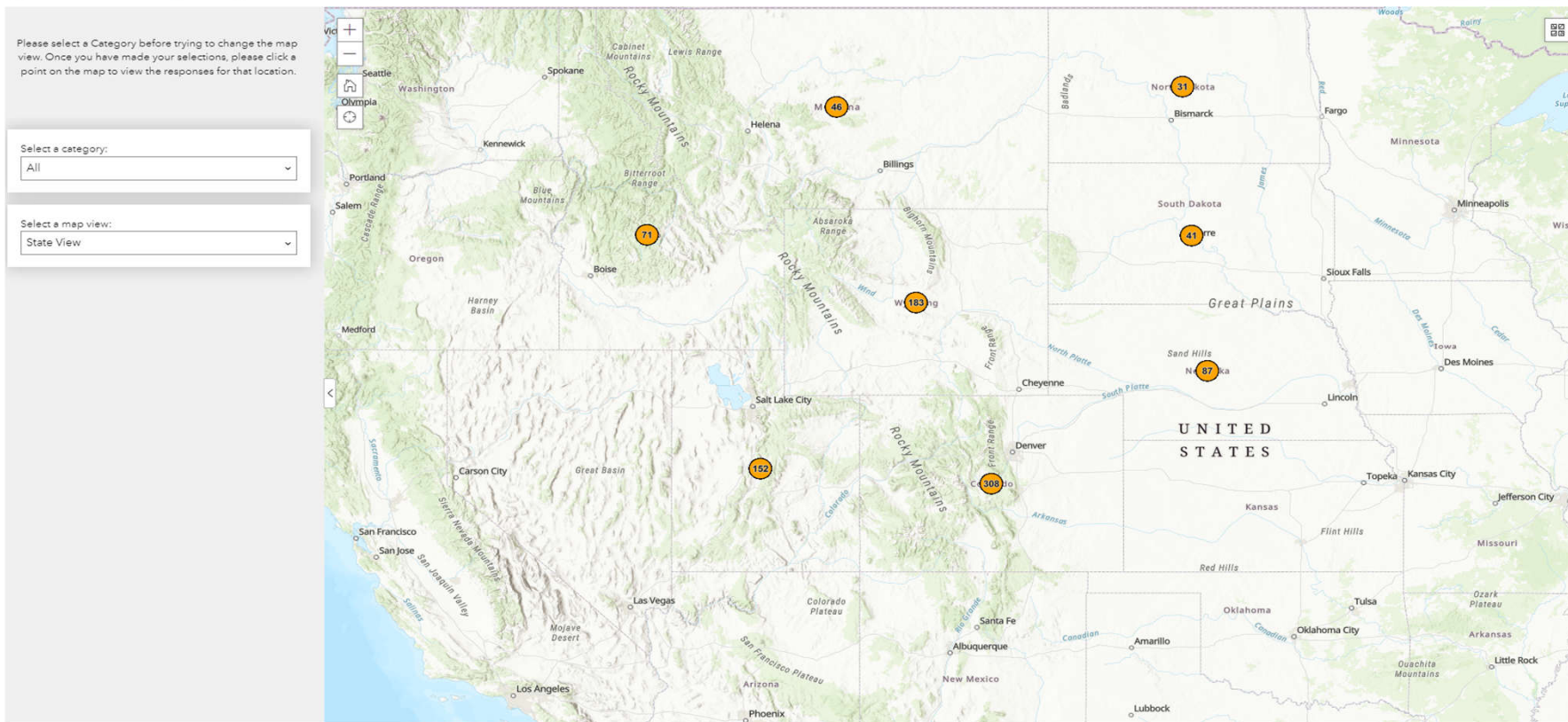
## Community Resilience Example

“This picture was taken at the railroad complex in Evanston. Evanston has been through many different booms and busts ... [b]ut through all the busts Evanston has used the infrastructure built up during boom times to help carry it out of busts. The railroad complex is one example as the abandoned UP buildings were turned into community spaces for Evanston and southwestern Wyoming.”



# Profiles in Community Resilience Map Application

Profiles in Wyoming Resilience Map



<https://bit.ly/walloppwrp>

# Map Application – Multistate View

Profiles in Wyoming Resilience Map

Please select a Category before trying to change the map view. Once you have made your selections, please click a point on the map to view the responses for that location.

Select a category:  
Barrier and Opportunity - Education

Select a map view:  
State View

Zoom to

Responses in Wyoming:

**Barrier and Opportunity - Education:** Track day.  
More fun outside activities for everyone should be implied in the educational system. Nowadays it's about you tube and ticktock .  
Unity in our city needs to improve



<https://bit.ly/walloppwrp>

# Map Application – County View

Profiles in Wyoming Resilience Map

Please select a Category before trying to change the map view. Once you have made your selections, please click a point on the map to view the responses for that location.

Select a category:  
Barrier and Opportunity - Employment

Select a map view:  
County View

Zoom to

1 of 3

Responses in Wyoming, Fremont County:

**Barrier and Opportunity - Employment:** This is downtown Dubois, WY. These little stores are the backbone of the community and that is really all there is. It's a huge barrier but it's a way of life for this community.



<https://bit.ly/walloppwrp>

# Map Application – Economic Region View

Profiles in Wyoming Resilience Map

Please select a Category before trying to change the map view. Once you have made your selections, please click a point on the map to view the responses for that location.

Select a category:  
Opportunity - Education

Select a map view:  
Economic Region View

The map displays Wyoming and surrounding areas, including Montana, Idaho, North Dakota, South Dakota, Nebraska, and Colorado. Economic regions are outlined, and several locations are marked with numbered circles: 2 (orange), 3 (orange), 6 (orange), 8 (green), and 23 (orange). A pop-up window titled 'Responses in Wyoming, South Central Economic Region:' shows a photograph of a school building with the caption 'Opportunity - Education: Our local k-12 school'. The map interface includes a search bar, zoom controls, and a '1 of 8' indicator.



<https://bit.ly/walloppwrp>

# Map Application – Community College Region View

Profiles in Wyoming Resilience Map

Please select a Category before trying to change the map view. Once you have made your selections, please click a point on the map to view the responses for that location.

Select a category:  
Opportunity - Employment

Select a map view:  
Community College Region View

Zoom to 1 of 18

Responses in Wyoming, Laramie County Community College Region:

Opportunity - Employment: The welcome sign photo was taken on the I60 WY/NB border, so Laramie County.



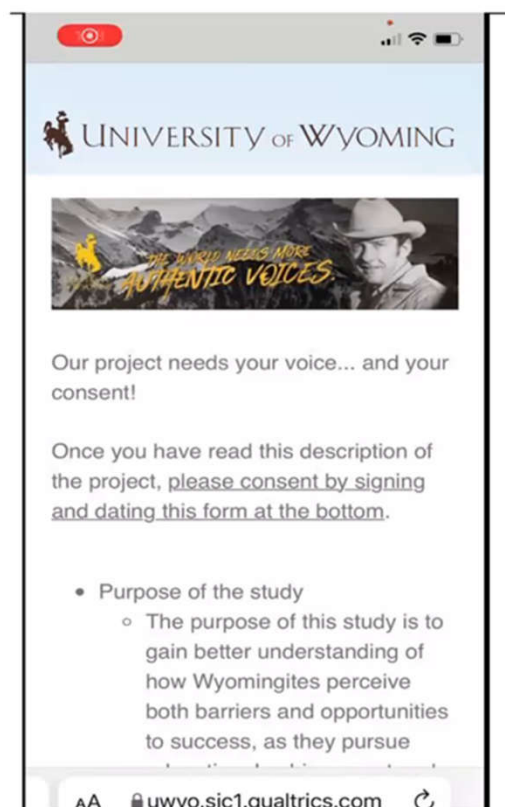
<https://bit.ly/walloppwrp>

# New Partnership Opportunity

Seeking Collaborations with Cities/Counties/Agencies, Chambers/Economic Development Organizations & Schools to Expand this Project to Develop & Map Community Profiles

**For more information contact:**

Jean Garrison or Jason McConnell  
307-766-6119 / wallop@uwyo.edu



Find Project Information Here







## Thank You

- School of Politics, Public Affairs and International Studies
- Wyoming DataHub & College of Arts & Sciences
- Supporters of the Malcolm Wallop Civic Engagement Program
- Statewide Partners like you who have facilitated this project!!



Website: <https://www.uwyo.edu/wallop>  
Email: [wallop@uwyo.edu](mailto:wallop@uwyo.edu)

